



Sydenham to Bankstown

Making way for Sydney Metro

Southwest Link update

December 2024



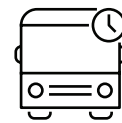
Southwest Link buses provide a free, high frequency service between Sydenham and Bankstown, helping you get to where you need to go.

While the T3 Line is upgraded to Metro standards, we will keep you up-to-date with the progress of the conversion and anything you need to know about getting around using Southwest Link.

Find out about:

- Southwest Link services changes
- Summer timetables
- T6 trackwork
- Walking and bike riding options
- Metro construction progress
- Bus and passenger safety.

Did you know...



110

number of Southwest Link buses in service to take you where you need to go

1,000+

number of Southwest Link services delivered every weekday

11,300

number of kilometres travelled by Southwest Link buses every weekday

2 million+

number of journeys taken by Southwest Link passengers so far

For more information visit:

transportnsw.info/southwestlink



Making way for Sydney Metro



Southwest Link update

December 2024

Southwest Link service changes			
Location	Dates	What's happening	Impact to Southwest Link services and local traffic
Canterbury Station	26 December 2024 until 8 January 2025	Metro upgrade work within Canterbury Station and on the Canterbury Road bridge (outside the station)	<ul style="list-style-type: none">• Temporary fencing will be used on Canterbury Road to help pedestrians cross the road safely• An eastbound lane closure. on Canterbury Road and pedestrian detours will also be in place• Traffic control will help pedestrians and provide information to Southwest Link passengers• A temporary 40km/h speed limit will be introduced in the immediate area to ensure worker safety.
Marrickville Station	From 14 January 2025 for around four months	The Metro construction team will establish a site compound on the western (northbound) side of Illawarra Road	<ul style="list-style-type: none">• From 14 January, the southbound bus stop (for Southwest Link services heading to Bankstown) will be relocated approximately 40 meters north• From 20 January, the footpath on the western side of Illawarra Road will close for approximately four months• Southwest Link passengers and other road users may experience minor localised delays• A temporary 40km/h speed limit will be introduced in the immediate area to ensure worker safety.
Dulwich Hill	From 8 January for up to four months	Metro upgrade work within Dulwich Hill Station and on the Wardell Road bridge (outside the station)	<ul style="list-style-type: none">• The Wardell Road eastern lane will be slightly reduced (outside the station), and the eastern footpath will also be closed• Ongoing night and weekend work will occur across the first few months of 2025, with further work required during the April school holidays• A temporary 40km/h speed limit will be introduced in the immediate area to ensure worker safety.

Your local bus services may have changed

On 8 December 2024, Transport for NSW introduced changes to some bus services across Sydney's Inner West.

These changes include timetable and minor route changes, and adjustments to some school services.

What's changed?

- Timetable changes on 46 routes to improve reliability.
- Additional services or reduced frequency to support demand.
- Routes 433, 442 and 526 are being upgraded to the All-day Frequent Network, with services operating every 10 minutes, 7 days a week.
- New overnight services on Fridays and Saturdays on routes 433 and 442.
- Improved frequency and capacity to support the Bankstown line shutdown and Southwest Link.
- Routes 425, 503 and 504X withdrawn and replaced by additional services on other routes.

Changes will also be introduced to bus services in other parts of Sydney from 19 January 2025

For full details about the bus changes, please visit: transport.nsw.gov.au/buschanges

Plan your journey at transportnsw.info/trip

Returning to school or work in 2025

Southwest Link buses will be in place across 2025, so students and other passengers using public transport in the new year should plan ahead and allow extra travel time to get around.

For those using Southwest Link services for the first time, information is available at: transportnsw.info/southwest-link

Changes have also been made to other local transport services, including recent rail and bus timetables changes, and the introduction of the T6 Line between Bankstown and Lidcombe.

Before you travel, plan your trip at: transportnsw.info/trip

Summer holiday public transport

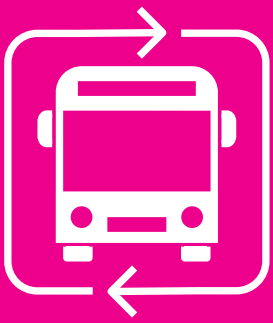
Between 23 December 2024 and 26 January 2025, some train, bus, and ferry services will run to different times. Please plan ahead and allow extra travel time.

For further details visit transportnsw.info

T6 Trackwork

From 9-25 January, buses will replace trains between Lidcombe and Bankstown.

Plan your journey at: transportnsw.info/trip



Southwest Link update

December 2024

Make riding or walking part of your commute!



With the T3 Bankstown line upgrade in full swing, more people are bike riding to get from A to B. We've got three tips for you to embrace the freedom of riding this summer.

1. Explore the Southwest Link riding routes – for a fun and convenient way to reach Sydenham, Tempe and Redfern. These routes mostly use existing cycleways, shared paths, and quiet streets – just follow the pink Southwest Link bike riding signs. Download the bike riding map [here](#).
2. Get inspired by Ellis – hear from a local rider about how bike riding is not only practical, it also offers fresh perspectives on your neighbourhood. Read [Ellis' story](#)
3. Link your Opal card for convenient bike parking at Sydenham – to access the new bike parking sheds you don't need to book ahead, just link your Opal card beforehand [here](#).

Don't forget to check out more handy tips and information on our [Southwest Link Riding and Walking Options](#) pages.

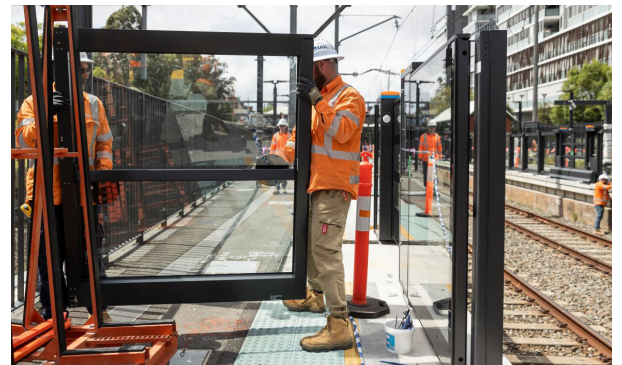
Sydney Metro – Construction Progress

During the conversion of the T3 Line, the Sydney Metro team will complete comprehensive upgrades at stations and in the rail corridor.

In the first months of the conversion, construction work has focused on activities that must be completed before testing and commissioning can begin.

Already, significant progress has been made towards the completion of the following activities:

- Removal of part of the previous Bankstown Station platform to make way for the future plaza
- Installing platform screen doors and mechanical gap fillers on station platforms
- Preparations for the start of corridor protection activities at bridges along the alignment
- Installing security and segregation fencing
- Track and electrical upgrades and testing and commissioning of services
- Preparations for train testing.



New platform screen doors a key feature of Sydney Metro station



At Bankstown we are creating a new central plaza between the Metro and Sydney Trains stations



Southwest Link update

December 2024

Safety and Comfort

There are many ways you can contribute to a safe and comfortable experience when using public transport services, including Southwest Link buses.

Below are tips to help keep your journey, and the journey for those around you, safe and comfortable, especially at peak travel periods when services may be busy.

Before travel and at the bus stop

- Stay alert and don't be distracted by your mobile phone.
- Keep the footpath clear to allow others to pass the bus stop safely.
- Allow passengers to get off before you get on.
- Watch your step when getting on and off the bus

While on board

- If seated, offer your seat to someone who needs it more than you. This includes people who are older, who have a disability or impaired mobility, who are pregnant or travelling with children.
- If no seat is available, move to the back of the bus and hold onto the handrails / straps.

- Do not stand in the safety area around doors.
- Ensure luggage, bags and personal items are stowed correctly and not blocking the aisle.

Getting off the bus

- As the bus approaches your stop, remain seated but prepare to get off.
- Give the driver plenty of time when you ring the bell before your stop to allow the bus to pull into the stop safely and smoothly.
- When getting off the bus, use the doors that are most convenient. If you require assistance, use the front doors.
- Watch your step and mind the gutter when getting off the bus.

Contact us

For enquiries, complaints or feedback, our team will remain available via the contact details below.



Project Infoline **1800 684 490**



projects@transport.nsw.gov.au



www.transport.nsw.gov.au/community-connect



Sydney Metro
24-hour community info line: **1800 171 386**



Interpreter service

For languages other than English call **131 450**
Arabic • Greek • Hindi • Mandarin • Vietnamese

بالرقم لطلب خدمة الترجمة الشفهية للغات غير الإنجليزية اتصل **131 450**

Για υπηρεσίες διερμηνείας σε άλλες γλώσσες εκτός από τα Αγγλικά καλέστε το **131 450**

अंग्रेज़ी के अतिरिक्त अन्य भाषाओं के लिए दुभाषिया सेवा पर कॉल करें **131 450**

获取英语以外的其他语言口译协助服务可以致电 **131 450**

Để có dịch vụ thông ngôn cho các ngôn ngữ khác tiếng Anh, gọi số **131 450**